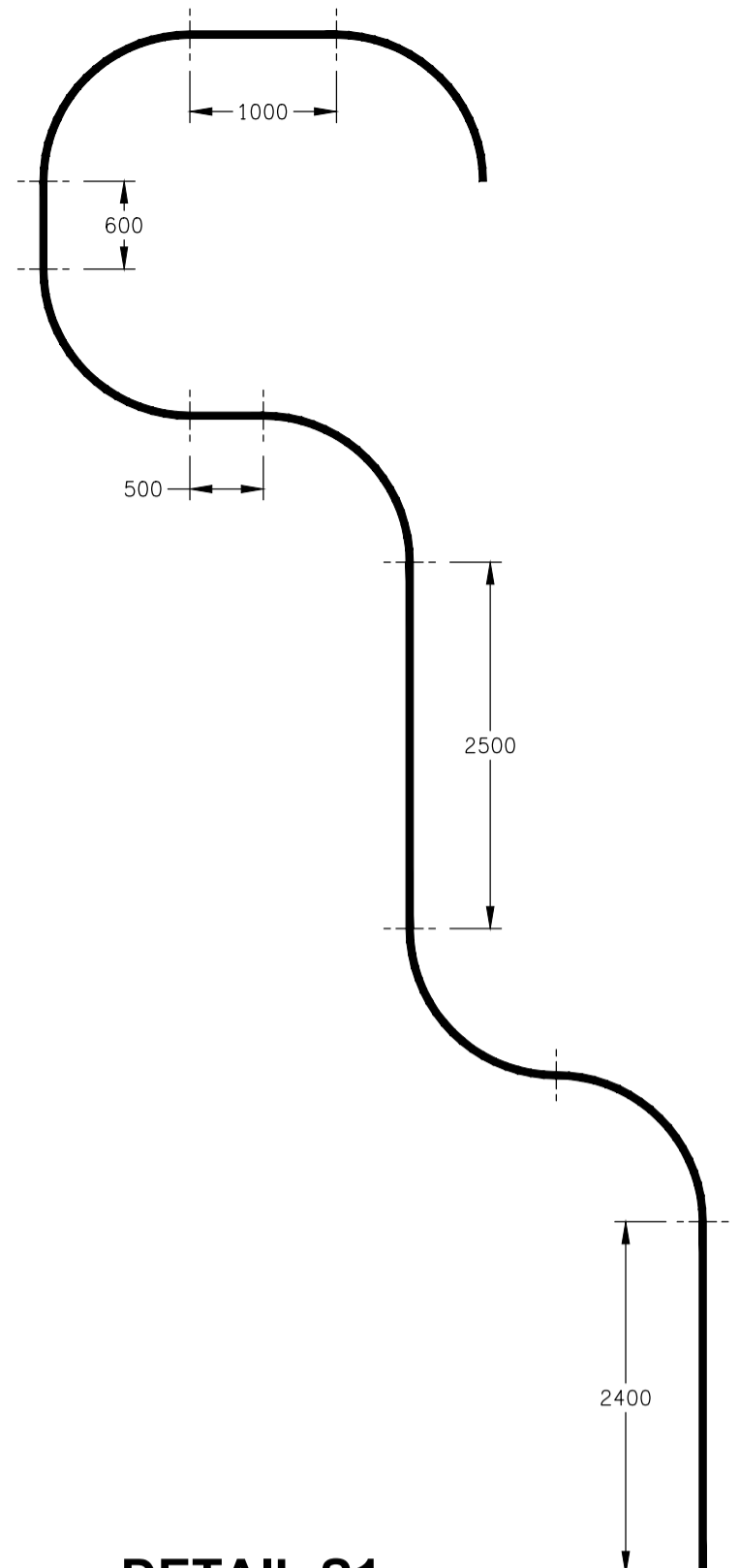
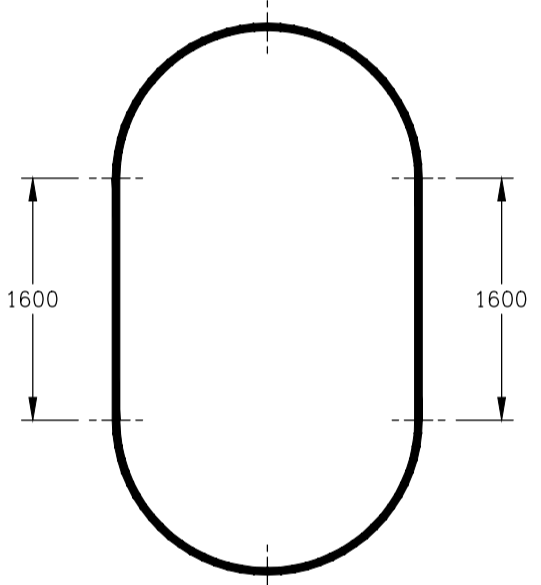


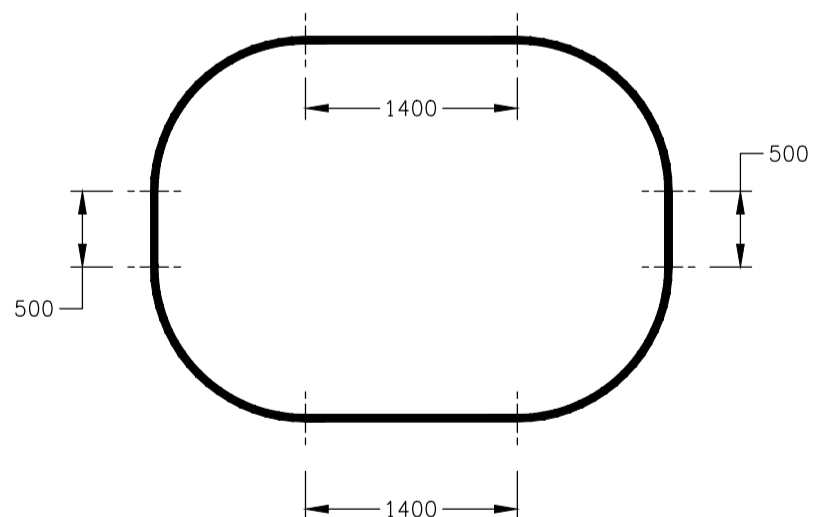
**GROUND LEVEL
FLOOR PLAN**
SCALE 1:100



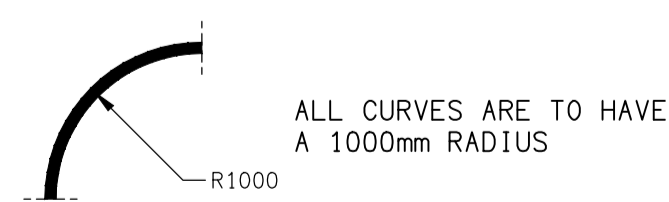
DETAIL S1
LIGHTING EXTRUSION CONFIGURATION
SCALE 1:50



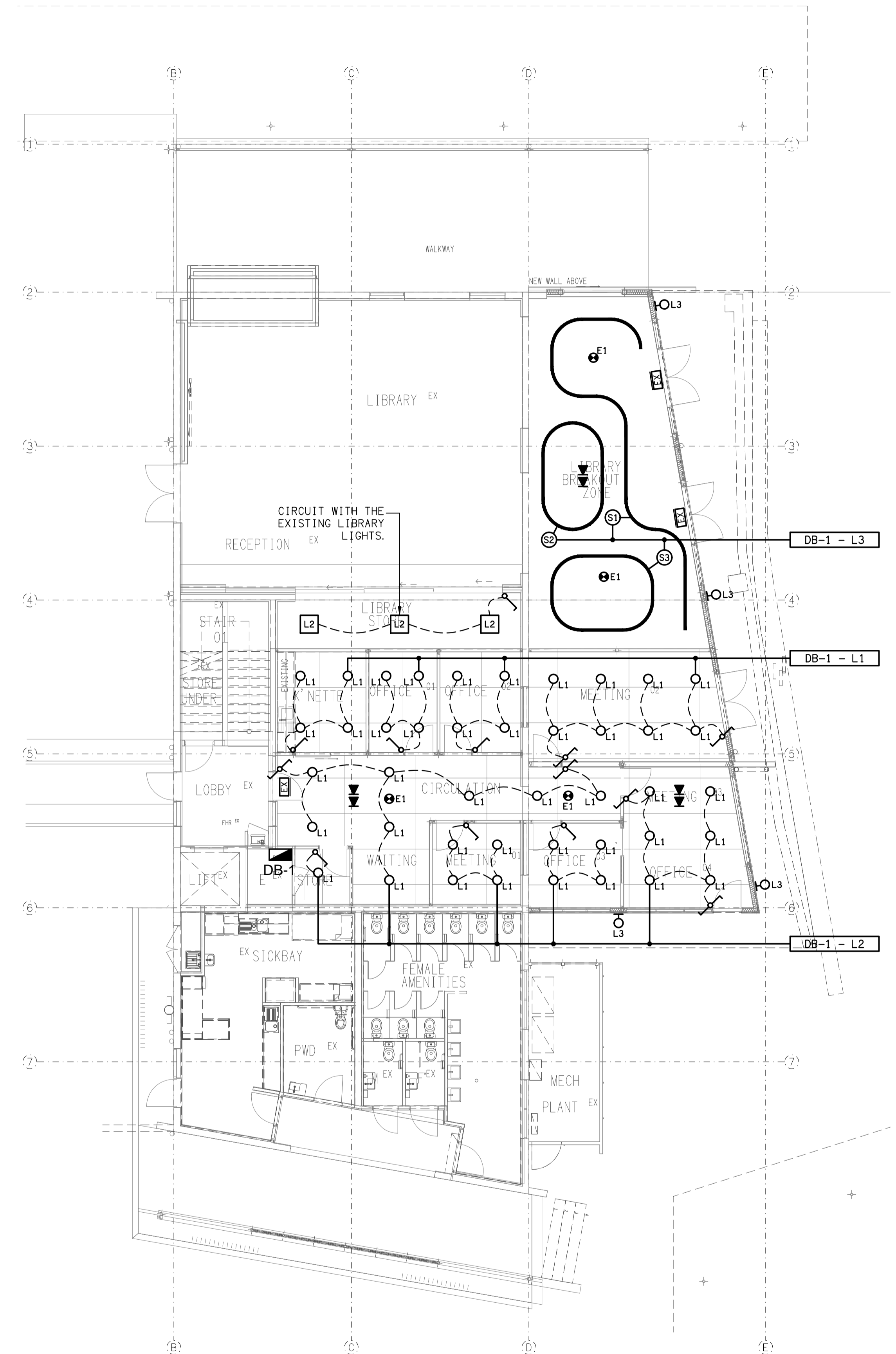
DETAIL S2
LIGHTING EXTRUSION CONFIGURATION
SCALE 1:50



DETAIL S3
LIGHTING EXTRUSION CONFIGURATION
SCALE 1:50



DETAIL TYPICAL CURVE
LIGHTING EXTRUSION CONFIGURATION
SCALE 1:50



**GROUND LEVEL
REFLECTED CEILING PLAN**
SCALE 1:100

| | | | | | |
|--|---|---|--|--|------------------------------|
| ELECTRICAL DESIGN GROUP BRISBANE PTY LTD ACN 092 710 793 TRADING AS: ELECTRICAL DESIGN GROUP | THE COPYRIGHT OF THIS DRAWING REMAINS THE PROPERTY OF THE ELECTRICAL DESIGN GROUP. USE FIGURED DIMENSIONS IN PREFERENCE TO SCALE. ALL DIMENSIONS TO BE VERIFIED ONSITE. | ELECTRICAL DESIGN GROUP ELECTRICAL BUILDING SERVICES CONSULTANTS BRISBANE GOLD COAST | PROJECT: KINGS CHRISTIAN COLLEGE - PIMPAMA PRIMARY LIBRARY & ADMINISTRATION PIM20 | A PRELIMINARY REV. DESCRIPTION: | 04/03/2024 DATE: |
| | | | | DRAWING: ELECTRICAL SERVICES GROUND LEVEL PLANS | |
| P.O. Box 15, Sherwood Q.4075 Phone: (07) 3278 4375 Email: brisbane@edg.net.au Web: www.edg.net.au | | | 198 PIMPAMA JACOBS WELL ROAD, PIMPAMA, QUEENSLAND | SCALE: 1:100 | PROJECT NO: C3210a |
| | | | | DRAWING NO: E03 | REVISION: A |